

# Inline filter

**FIF**



## MATERIALS

**Head:**  
Die cast alluminum alloy

**Bowl:**  
Die cast alluminium alloy

**Seals:**  
Nitrile ( buna n )

**Indicator housing:**  
Brass

## PRESSURE

**Max working:**  
2 MPa ( 20 bar )

**Test:**  
3 MPa ( 30 bar )

**Bursting:**  
4 MPa ( 40 bar )

## BYPASS VALVE

170 kPa (1.7 bar)+/- 10%

## WORKING TEMPERATURE

From -25° to +110° C

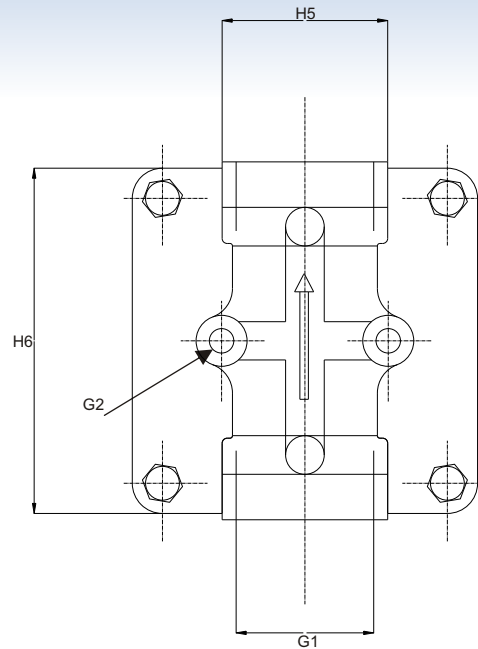
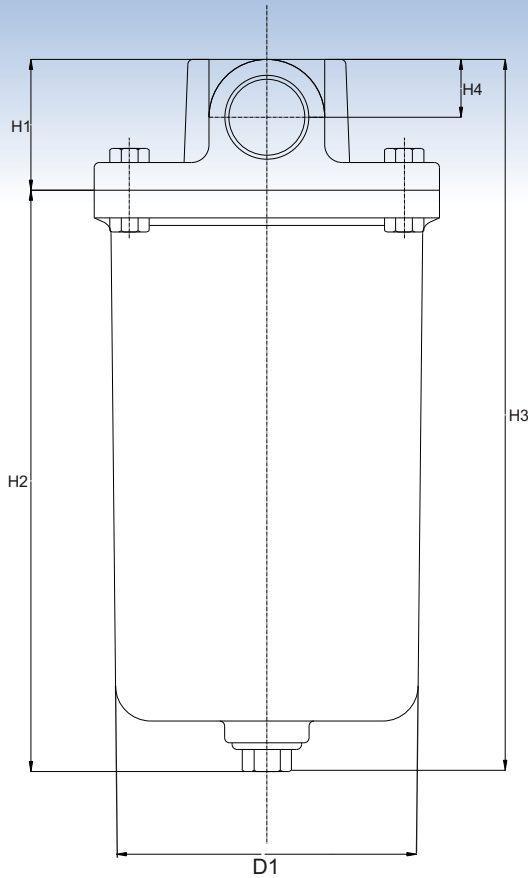
## COMPATIBILITY

**Full with fluids:**  
HH-HL-HM-HR-HV-HG



## VISUAL CLOGGING INDICATOR

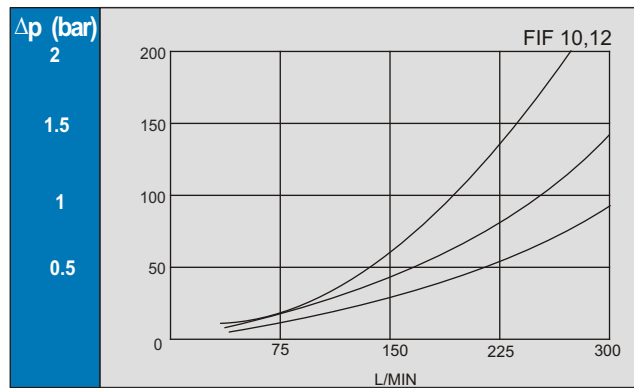
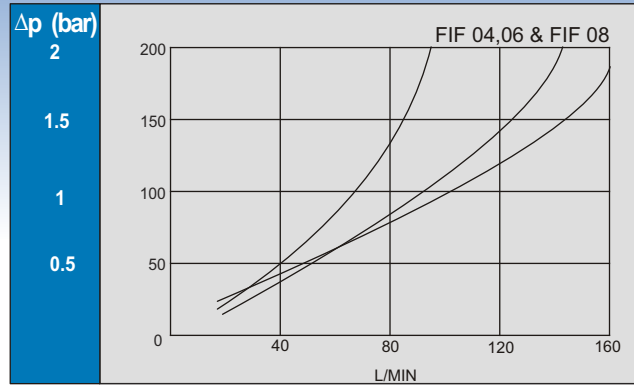
A visual clogging indicator allows monitoring of the element condition and provides maximum element life by indicating the exact time for the element replacement.



FILTER HOUSING												
PART NO	PORT G1	D1	H1	H2	H3	H4	H5	H6	G2	FILTRATION AREA ( SQ.CM)		WEIGHT Kgs
										PAPER	WIRE MESH	
FIF04	1/2"	67	44	105	149	21	38	88	M8	920	315	0.900
FIF08	3/4" 1"	87	52	128	180	23	44	114	M8	2206	774	1.800
FIF10	1-1/4" 1-1/2"	120	70	222	292	31	57	142	M10	7237	2096	3.600

**FFP PRODUCTS ( HYDRAULICS DIVISION )**

17, SAI NIKETAN, CHANDAVARKAR LANE, BORIVALI WEST,  
MUMBAI 400 092, MAHARASHTRA, INDIA  
Tel: +91 22 28925607 Fax: +91 22 28904071  
e-mail: info@ffpproducts.com - <http://www.ffpproducts.com>



FIF R 04 B 010 R4

Nominal Size complete filter
R - RETURN
S - SUCTION
B - NO BY PASS

PORT
04 - 1/2"
06 - 3/4"
08 - 1"
10 - 1.1/4"
12 - 1.1/2"

THREAD
B - BSP
N - NPT
S - SAE

FLTER MEDIA
010 - 10μ PAPER
025 - 25μ PAPER
A10 - 10μ ABS
A25 - 25μ ABS
149 - 149μ wire mesh

By-pass valve
R4 - 25 PSI
R - 15 PSI
S1 - 3 PSI
S2 - 5 PSI